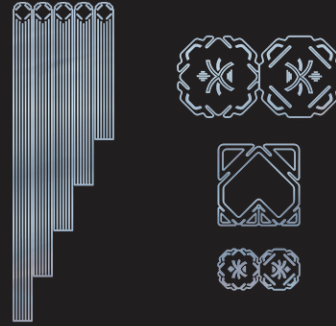


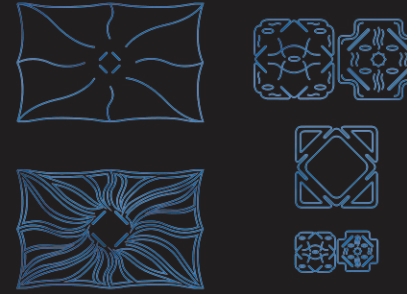
LOOK 1 [FIRE]



LOOK 2 [WIND]



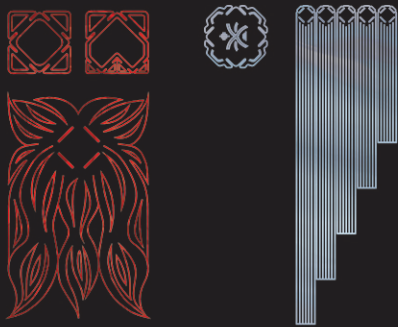
LOOK 3 [WATER]



LOOK 4 [EARTH]



LOOK 5 [FIRE / WIND]



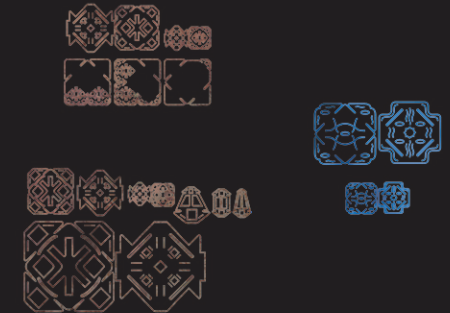
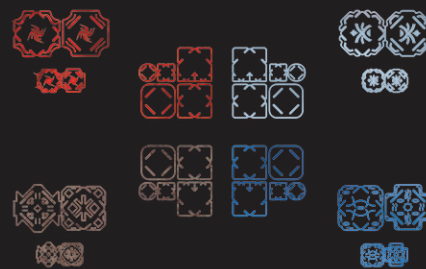
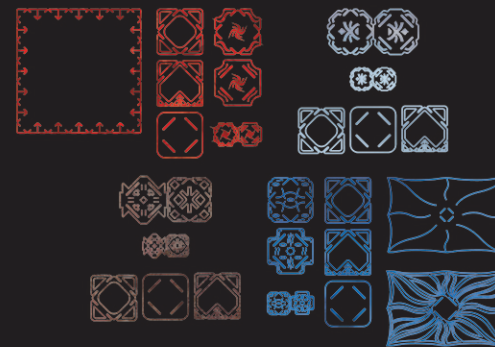
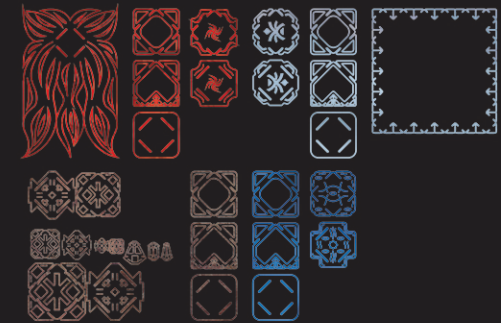
LOOK 6 [WIND / EARTH]



LOOK 7 [WATER / FIRE]



LOOK 8 [EARTH / WATER]

LOOK 9
[FIRE / WIND / WATER / EARTH]LOOK 10
[FIRE / WIND / WATER / EARTH]LOOK 11
[FIRE / WIND / WATER / EARTH]LOOK 12
[FIRE / WIND / WATER / EARTH]

YUIMA NAKAZATO
COUTURE

[IGNIS AER AQUA TERRA]

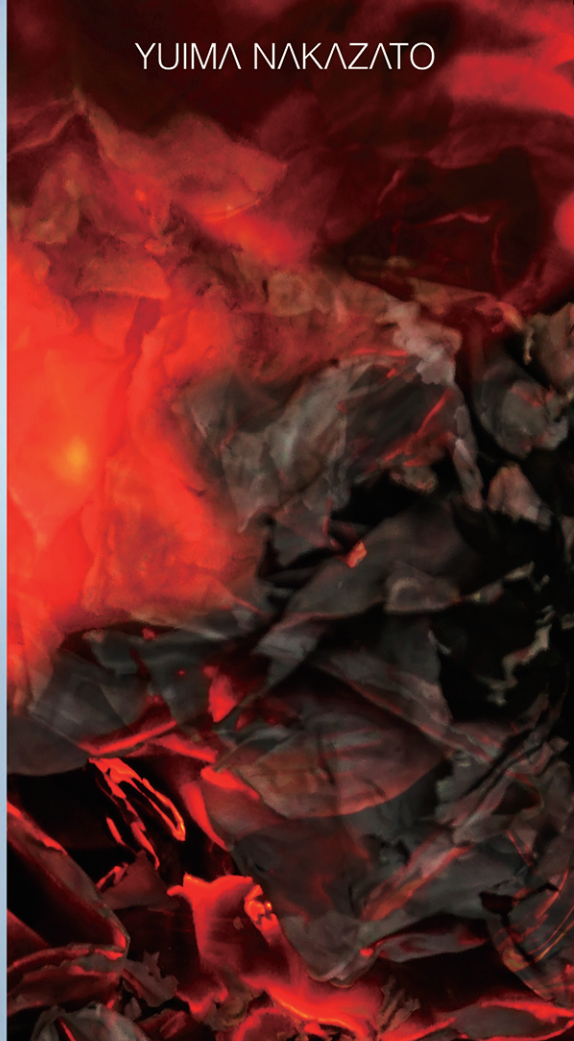
SPRING/SUMMER 2017

Long ago in history was the belief that the four elements—fire, wind, water, and earth—could combine together as one to birth a never before known substance. Today, this is an unrealistic fantasy, however, by incorporating the latest in technology, the designer imagined the future of clothing in this collection.

UNIT CONSTRUCTED TEXTILE

In the near future, textiles will be made for the individual whom wears it. By function, aesthetics, touch, form and other factors, clothing will be able to transform instantaneously. Eventually, in fashion, no two garments will be the same.

This is based on a long-term project towards a vision for the future in which YUIMA NAKAZATO would like to realize: "to each individual, his own design". If clothing can be created without being sewn, the concept of designing, manufacturing, and distribution will change greatly. Designing for specific individuals will be made possible. Each item in this collection is created without a single thread or needle, each formed simply of thousands of components, which we name Units. The patterns seen on this leaflet summarize the Units that make up each piece. Please use this as a visual aid for the collection.



PR

TOTEM FASHION PARIS
KUKI DE SALVERTES
SEBASTIEN DE BRITO
VERA WAGNER

ATELIER

TOMOHIRO TOKITA
JUNJIE SUN

PARIS TEAM

MOSSI TRAORE
LES ATELIERS PARISIENS
KANAKO NISHIO
IRYA CISSÉ
ALEXANDRA KALDILI
HASSINA MARCHANE
MUNICIPALITÉ DE VILLIERS SUR MARNE

YUIMA NAKAZATO CO., LTD.

YUIMA NAKAZATO
KANAKO MATSUO
TATSUYA HAYAKAWA
RACHEL SASAKI
SACHI KAWASHIMA
AYAKA NAKAJIMA
ELISE GETTLIFFE
RYO KAWASHIMA
SHUNNOSUKE MITSUOKA
DAI OHGAMI
HIROKI SHIMODA
KEIICHI UEDA
AI KAMATA
KIMIKO ARIMOTO
YUKIKO "JUMBO" MATSUZAKI

SHOW

MATHIEU GALLIX
DAISUKE YANO
SENJAN JANSEN
NICOLETA ILIESCU
SHOJI FUJII
YUICHI IHARA
CLAIRE ROBERTSON
RASEN STUDIO

HAIR

JOJI TANIGUCHI FOR SHISEIDO

MAKEUP

JUN NAKAMURA FOR SHISEIDO

ASSISTANT

NAOYUKI ANDO
ERIKA AOKI
NATSUKI ADOSHIMA
MASASHI DOI
NAOTO FUJII
CHIKAKO HASHIMOTO
HODAKA HAYASHI
TOMOKA HYAKUTAKE
KAYANO IBA

MOMOKO KAMATA
KANA KAWASAKI
AI KONNO
SHOTTA KUBAMI
NOI KIKUCHI
NGUYEN KY
RISA MAEDA
KAORI MURAMATSU
RYO NUMAJIRI

SAYOKO OTSUKA
DAICHI SHIBA
KAZUYA SUGAI
HARABUSA TAKEDA
KENTO TANABE
RIHOKO TSUDA
MISAKO YABE
MAYU YAMAHAKU

SPECIAL THANKS

BRADLY DUNN
YOSHIKO IKOMA
SADAHIRO SHIMIZU
BUNKA FASHION COLLEGE
DOCONOBARGO
INFAS.COM.CO
KOBE DESIGN UNIVERSITY
MODE GAKUEN
MORISHITA KNITTING FACTORY CO.,LTD
OMIYA MERIYASU
UEDA COLLEGE OF FASHION

